



PXL-500 - Upgrade Advisor

This article explains how to use the new version of the PXL Upgrade Advisor (v4.8).



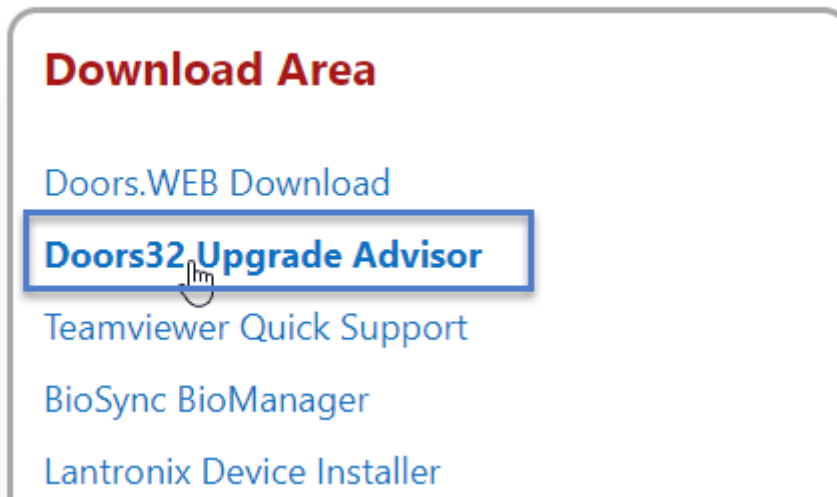
Notes:

- The most current version of the PXL Upgrade Advisor requires .NET Framework v4.8. At the download location, you will also find both a web installer and a full installer for .NET Framework v4.8 (if it is not already installed on the host PC).
- To download the utility from the Kerisys.com website you must be registered on the site and have your registered username and password.

1.0 Download the PXL Upgrade Advisor

Download the New Upgrade Advisor from the Kerisys.com website

1. Visit: kerisys.com.
2. Click the MEMBER LOGIN button in the upper-right.
3. Log into the website with your registered user name and password.
4. When you log in you will be at the Downloads Center.
5. Click on 'Supporting Software'.
6. Click 'Doors32 Upgrade Advisor'.

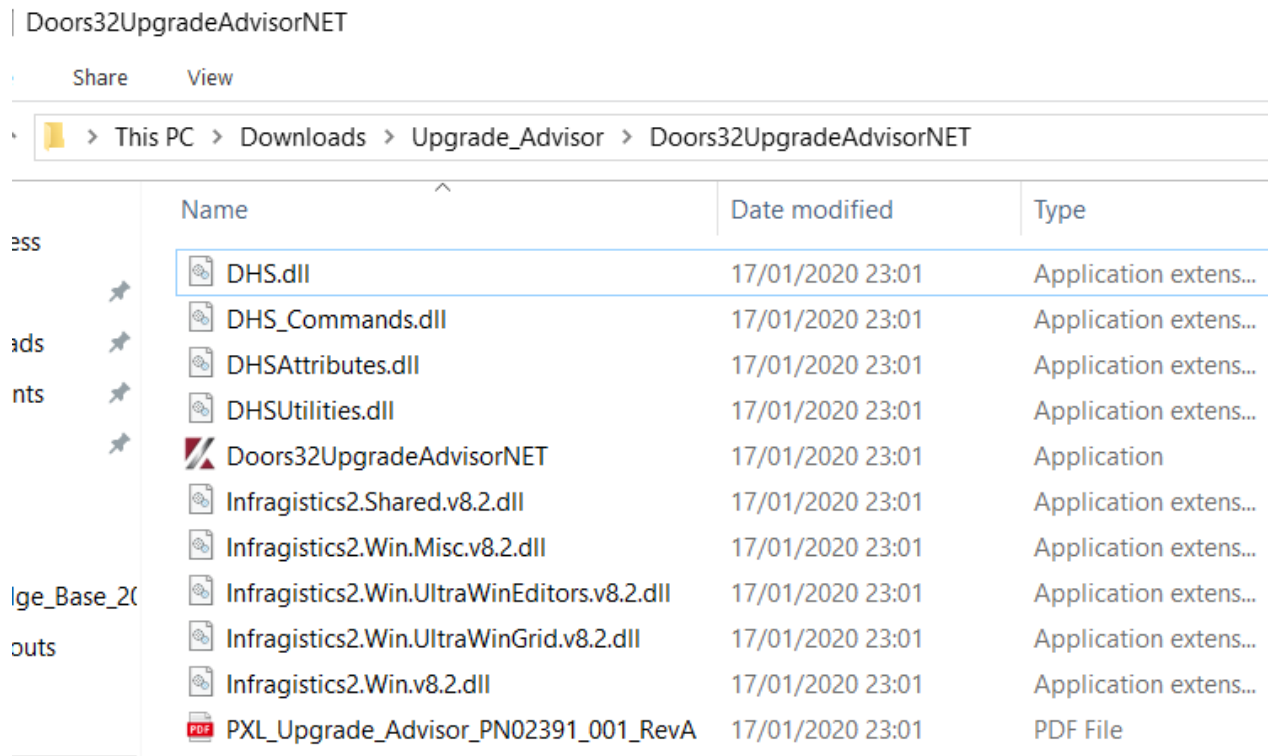


7. Download both of the files in the directory.

2.0 Extract the Contents of the ZIP file

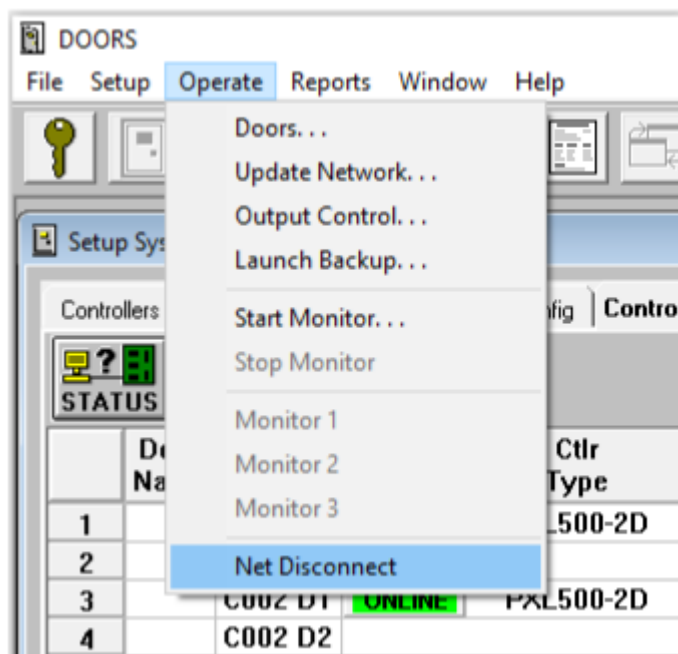
Note: You should also run the installer for .NET Framework v4.8 to ensure it is installed on the host PC. You will see a notification if you run the installer and the feature is already installed.

1. Navigate to the folder where the downloaded zip file exists:
2. Right-click the file and select to extract all files.
3. Several files and a Logs folder will be extracted.



3.0 Disconnect from the PXL Controller Network

1. From within Doors32 go to Operate >> Net Disconnect.



2. Doors32 will then drop the connection to the PXL controllers (allowing you to connect with the upgrade advisor).

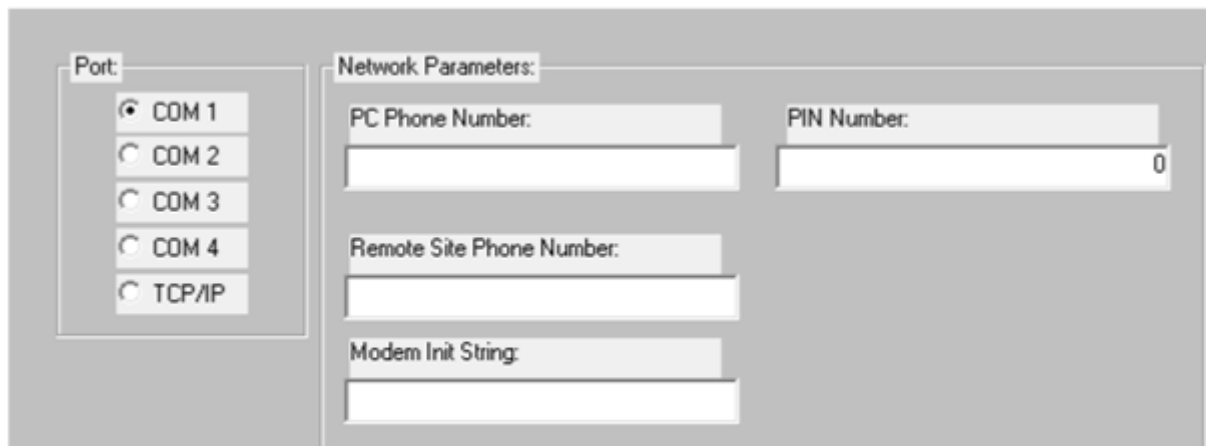
4.0 Run the Upgrade Advisor Utility

1. Go back to the directory where you extracted the upgrade advisor files.
2. Double-click the 'Doors32UpgradeAdvisorNET' executable.
3. The upgrade advisor window will open.

4.1 To Connect via Serial or Modem

The upgrade advisor utility opens up on the Serial/Modem connection tab, so for these steps you will need to return to Doors32.

1. Go to Setup >> System >> Network Config. Make a note of which COM port is being used and (if applicable), any modem communication settings.



The screenshot shows a configuration window with two main sections. On the left, under 'Port:', there is a vertical list of radio buttons: COM 1 (selected), COM 2, COM 3, COM 4, and TCP/IP. On the right, under 'Network Parameters:', there are four text input fields: 'PC Phone Number:', 'PIN Number:' (with a '0' visible in the background), 'Remote Site Phone Number:', and 'Modem Init String:'.

2. Return to the upgrade advisor utility.
3. Select the appropriate PC COM port from the drop-down list. This COM port number is the COM port selected in Doors32 network config.
4. Enter the PXL Primary modem phone number (if connecting via modem).
5. Select the appropriate modem initialization string from the drop-down list (if connecting via modem).
6. Typically the PXL Primary Site ID will usually be 0. To check in Doors32 if you have multiple sites look for the SELECT SITE button. If there is no SELECT SITE button visible then you are not using multiple sites.
7. The PXL Primary Site PIN will also usually be 0.

8. Click the CONNECT button.
9. Enter your Email address (e-mail address is required) and optionally you can enter a customer contact telephone number.
10. Click the OK button.
11. In the Status Messages pane you should see a 'SUCCESSFULLY CONNECTED' message.

4.2 To Connect via TCP/IP

Again, you will need to go into Doors32. Go to Setup >> System >> Network Config. Make a note of the Remote Site TCP/IP address and check that the Remote Port Number is 10001:

The screenshot shows a configuration window with two main sections. On the left, under 'Port:', there are five radio button options: CDM 1, CDM 2, CDM 3, CDM 4, and TCP/IP. The TCP/IP option is selected. On the right, under 'Network Parameters:', there are four text input fields. The first is 'Server's Ethernet Port Number' with the value 10021. The second is 'PIN Number' with the value 0. The third is 'Remote Site TCP/IP Address' with the value 192.168.4.170. The fourth is 'Remote Site Port Number' with the value 10001. Below these fields is a checkbox labeled 'TCP/IP Encryption On' which is currently unchecked.

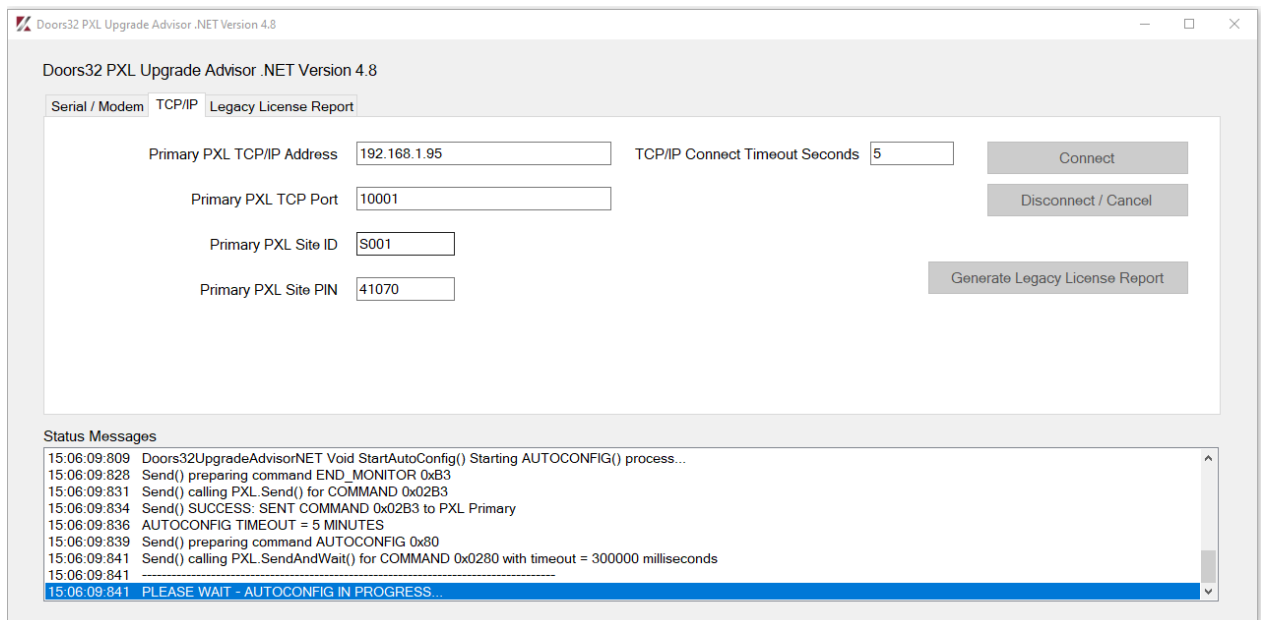
Note: If you have encryption selected, you should de-select the option then perform a smart update - you will then be able to connect to the network with the upgrade advisor. You should then re-enable encryption and update again once you have finished using the upgrade advisor.

1. Return to the upgrade advisor.
2. The upgrade advisor opens up on the Serial/Modem tab, so click on the second tab (TCP/IP).
3. Enter the IP address for the LAN-520 connected to the Primary PXL.
4. Typically the TCP/IP port number will remain at 10001 and the site ID will usually be S001.
5. The PXL Primary Site PIN will also normally be 0.
6. Click the CONNECT button.
7. Enter your Email address and optionally you can enter a customer contact telephone number.
8. Click the OK button.

9. In the Status Messages pane you should see a 'SUCCESSFULLY CONNECTED' message.

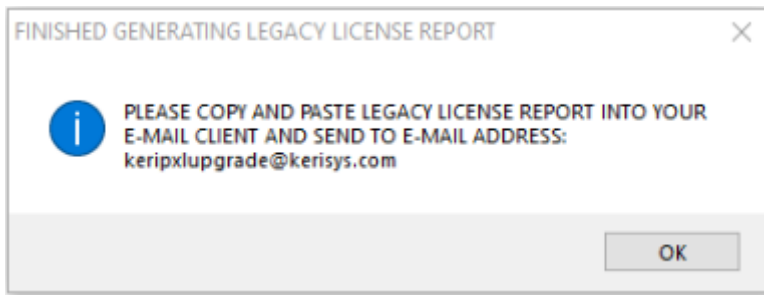
5.0 Generate and View the Legacy License Report

1. Once successfully connected, click the 'GENERATE LEGACY LICENSE REPORT' button.
2. In the Status Messages pane you will see the message: 'PLEASE WAIT - AUTO-CONFIG IN PROGRESS'.



Note: The PXL Auto-Config process can take approx. 2 minutes to complete.

3. Once Auto-config is complete you will see a message notifying you to copy the report into an e-mail and send it to: 'keripxlupgrade@kerisys.com'.



4. Click OK to this message.

6.0 Email the Legacy License Report

1. Click on the Legacy License Report tab.
2. Click the button labelled: 'COPY LEGACY LICENSE REPORT TO CLIPBOARD'.
3. Open up your e-mail client.
4. Click to write a new e-mail:
5. In the body of the e-mail message, right-click and select Paste - the report information will appear.
6. In the To: field, enter 'keripxlupgrade@kerisys.com'.
7. In the subject field enter your name and the name of the site.
8. Click send to send the report to Keri Systems.

7.0 Review the PXL System Report

When you receive the upgrade advisor report it will detail the total number of PXL controllers that have been detected on the site. It will provide a count of the number of fully supported controllers, a count of legacy controllers (there is a charge to add legacy controllers to Doors.NET) and there will be a count of how many unsupported controllers (such as the older PXL-250 controller type) - the PXL-250 controllers are NOT supported in Doors.NET - these controllers would need to be replaced for PXL-500s.

Doors32 PXL Upgrade Advisor .NET
PXL Legacy License Report
16 January 2020
15:34:12

PLEASE COPY AND PASTE LEGACY LICENSE REPORT INTO YOUR E-MAIL CLIENT AND SEND TO E-MAIL ADDRESS:
keripxlupgrade@kerisys.com

Customer EMail = customer@kerisys.com
Customer Telephone = 555 555 555

NUMBER OF PXL LEGACY LICENSES NEEDED = 3
FULLY-SUPPORTED CONTROLLERS COUNT = 11
UNSUPPORTED CONTROLLERS COUNT = 0

PXL LEGACY CONTROLLERS:

Controller address = 11 Slave
Controller type = PXL500 1-Door
Firmware version = 8.6.09
Legacy type = LEGACY

Controller address = 12 Slave
Controller type = PXL500 1-Door
Firmware version = 8.5.10
Legacy type = LEGACY

8.0 Troubleshooting

If the Utility Fails to Connect

1. Check the Doors.NET PXL Gateway is definitely stopped.
2. Ensure the controller is powered up and the communication cable is connected.
3. If connecting via Serial Modem connection ensure the COM port number is specified correctly.
4. If connecting via TCP/IP verify that the TCP port # and the IP address is correct.